

VISION MODULAR

INSTALLATION OF A BENCH HEIGHT MODULAR GANGING

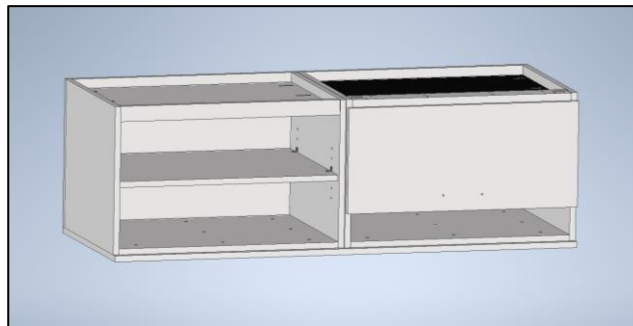


Figure 1

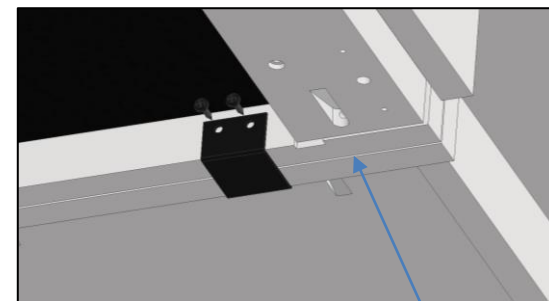
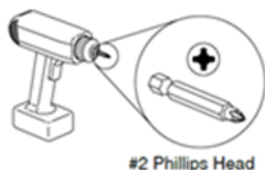


Figure 2

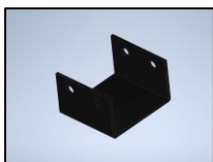
3 inches

Recommended Tools



#2 Phillips Head

Hardware Needed



(2) U-Bracket



#8 x 5/8" PHP Screw
(QTY Varies)

Failure to comply with installation instructions will compromise the safety, durability and performance of this product, which may risk injury to the user of this product and/or diminish the product life cycle. Jasper Group assumes no liability in these instances.

1. Once the top is attached, lay the units upside down on a nonmarring surface (Figure 1)
2. Position and secure a U-bracket 3 inches from the front so that it encases the end panels of both units using the screws provided (Figure 2)
3. Position and secure another U-Bracket 2 inches from the back of the unit so that it encases the end panels of both units using the screws provided (Figure 3)

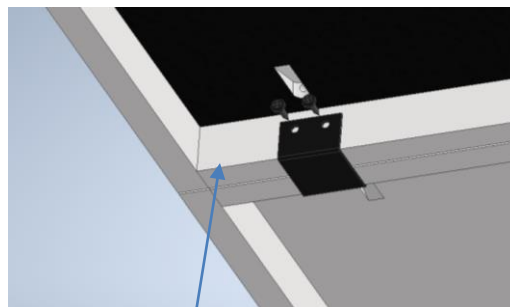


Figure 3

2 inches

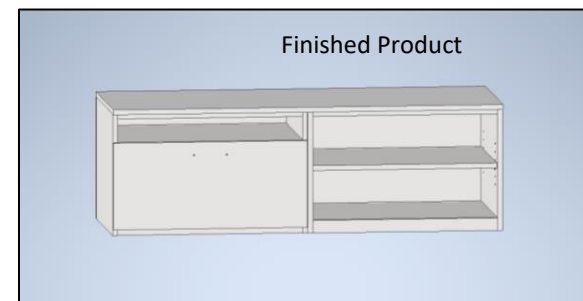


Figure 4

Finished Product